

February 18, 2013

ADDENDUM NO. 2

Bid Package 13-01R

BROOKSIDE ELEMENTARY SCHOOL – BUILDING B  
DSA NO. 03-113415

OAK PARK UNIFIED SCHOOL DISTRICT

OAK PARK, CA

This Addendum is being sent out to all contractors who are current plan holders.

In accordance with the contract documents, Section 00100 Instruction to Bidders: Paragraph 12 - Interpretation of Drawings, Specifications or Contract Documents, the following information or clarifications to the contract documents or drawings is hereby being provided.

**All information provided in this Addendum shall become a part of the Contract and Contract Documents for:**

**Brookside Elementary School – Building B**

## **SPECIFICATIONS**

### Item No. 1:

Refer to Addendum No. 1, dated February 8, 2013, Section 22 47 00, Drinking Fountains, Page 22 47 00-3 and delete Paragraph 2.1.1.3.1. and replace with the following:

2.1.1.3.1 Haws Corporation, Model 1119.14 wall-mounted drinking fountain (hi/lo, accessible)

### Item No. 2:

Refer to Addendum No. 1, dated February 8, 2013, Section 22 47 00, Drinking Fountains, Page 22 47 00-3 and delete Paragraph 2.1.2.3.1. and replace with the following:

2.1.2.3.1 Haws Corporation, Model 1119.14 wall-mounted drinking fountain (hi/lo, accessible)

Elkay, Model LK4405BF, wall-mounted outdoor tubular bottle filling station.

ADDENDUM NO. 2  
BROOKSIDE ELEMENTARY SCHOOL – BUILDING B  
DSA NO. 03-114189  
FEBRUARY 18, 2013

## **DRAWINGS**

### Item No. 3:

Refer to Addendum No. 1, dated February 8, 2013 and delete Drawing AD1-7, dated January 7, 2013 in its entirety.

### Item No. 4:

Refer to Drawing AD1-A2.2, dated January 7, 2013, Detail 2 and revise per the attached Drawing AD2-1, Detail 1, dated February 15, 2013.

### Item No. 5:

Refer to Drawing AD1-A3.2, dated January 7, 2013, Detail 3 and revise per the attached Drawing AD2-1, Detail 2, dated February 15, 2013.

### Item No. 6:

Refer to Drawing AD1-A6.60, dated January 7, 2013, delete Detail 10 and replace with the attached Drawing AD2-2, dated February 15, 2013.

### Item No. 7:

Refer to Drawing AD1-A6.62, dated January 7, 2013, delete Detail 7 and replace with the attached Drawings AD2-3 and AD2-4, dated February 15, 2013.

### Item No. 8:

Refer to Drawing AD1-P0.2, dated January 7, 2013 and revise the Plumbing Fixture Schedule per the attached Drawing AD2-P1, dated February 15, 2013.

### Item No. 9:

Refer to Drawings AD1-P2.2a, Detail 1, dated January 7, 2013 and revise the plan per the attached Drawing AD2-P2, dated February 15, 2013.

Each Subcontractor providing a proposal for the above mentioned project shall be required to acknowledge this Addendum as stated on the Bid Form – 00210, Page 2 of 4, Section 1.3, Acknowledgement Bid Addenda. Any Contractor who does not acknowledge this Addendum will be deemed Non-Responsive and the bid returned.

ADDENDUM NO. 2  
BROOKSIDE ELEMENTARY SCHOOL – BUILDING B  
DSA NO. 03-114189  
FEBRUARY 18, 2013

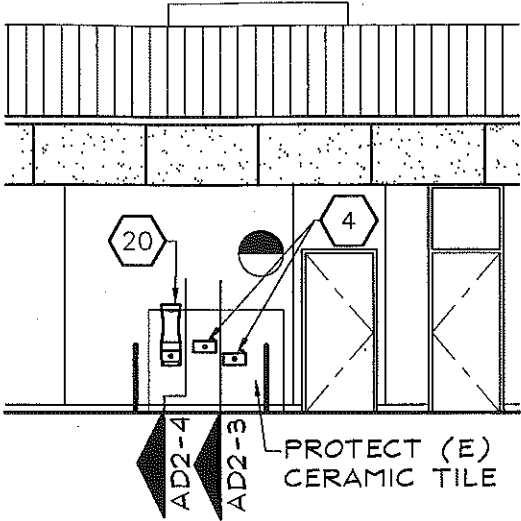
For any additional information regarding the Addendum you may contact me at the numbers provided below.

Thank you,

Keith Henderson  
District Representative for the Oak Park Unified School District Measure "R"  
Program/Construction Manager

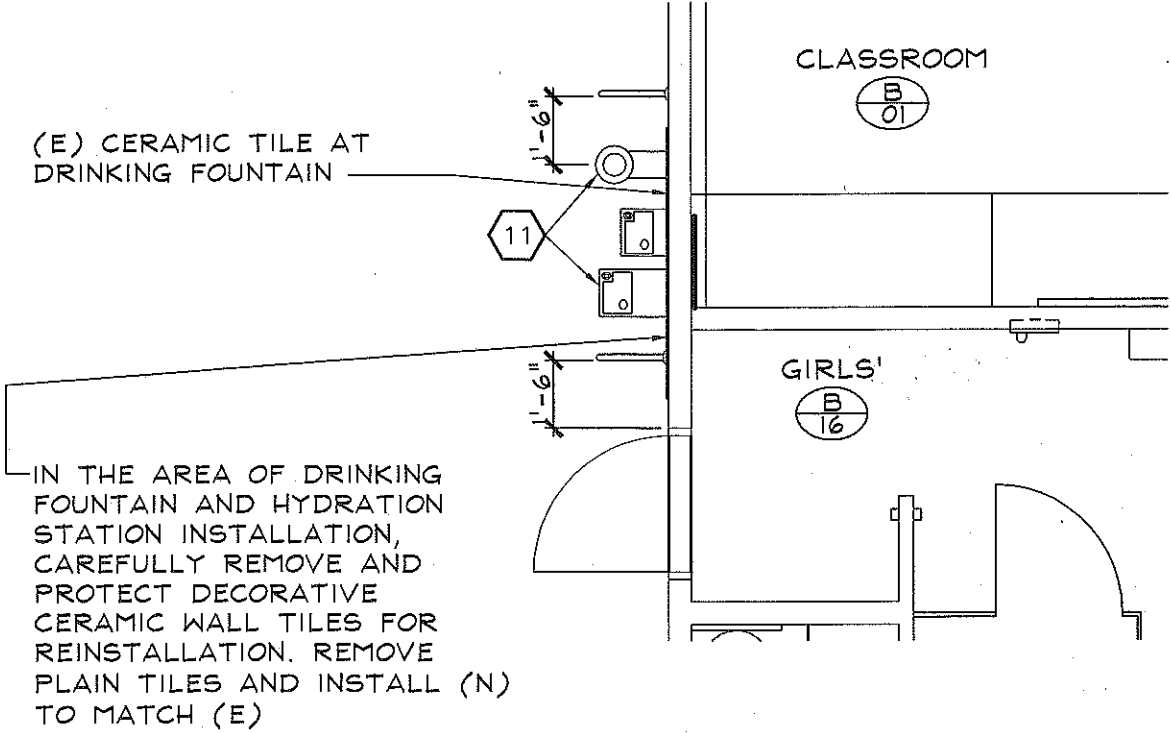
Balfour Beatty Construction

email: [khenderson@balfourbeattyus.com](mailto:khenderson@balfourbeattyus.com)



# 2 EXTERIOR ELEVATION

SCALE: 1/8" = 1'-0" REFER TO 3/AD1-A3.2, DATED 01-07-13  
FOR BALANCE OF WORK



# 1 PARTIAL FLOOR PLAN

SCALE: 1/4" = 1'-0" REFER TO 2/AD1-A2.2, DATED 01-07-13  
FOR BALANCE OF WORK



Brookside Elementary School Building B (Bid and CA)



KPI ARCHITECTS INC. ✪  
ARCHITECTURE, PLANNING, INTERIOR DESIGN  
650 EAST PARKRIDGE AVENUE, SUITE 105  
CORONA, CALIFORNIA 92879-1092  
PHONE: (800) 366-6381 FAX: (877) 493-2059

OAK PARK UNIFIED SCHOOL DISTRICT

DRAWING NO.

AD2-1

DATE: February 15, 2013

PROJECT NO.: 234808

(N) OUTDOOR HYDRATION STATION  
 REMOVE CERAMIC TILE TO PROVIDE ADEQUATE AREA TO INSTALL BLOCKING AND MOUNTING PLATES (VERIFY ACTUAL AREA REQUIRED). REMOVE TILE BACK TO NEAREST GROUT JOINT. CAREFULLY REMOVE DECORATIVE TILE AND PROTECT FOR RE-INSTALLATION  
 LOCATE STUDS TO COORDINATE WITH DRINKING FOUNTAIN MOUNTING PLATE AND HYDRATION STATION INSTALLATION AND REQUIREMENTS. PROVIDE BLOCKING IN WALL FOR MOUNTINGS

(N) MOUNTING PLATE PROVIDED BY MANUFACTURER. INSTALLED BY CONTRACTOR PER MFR'S. INSTRUCTIONS

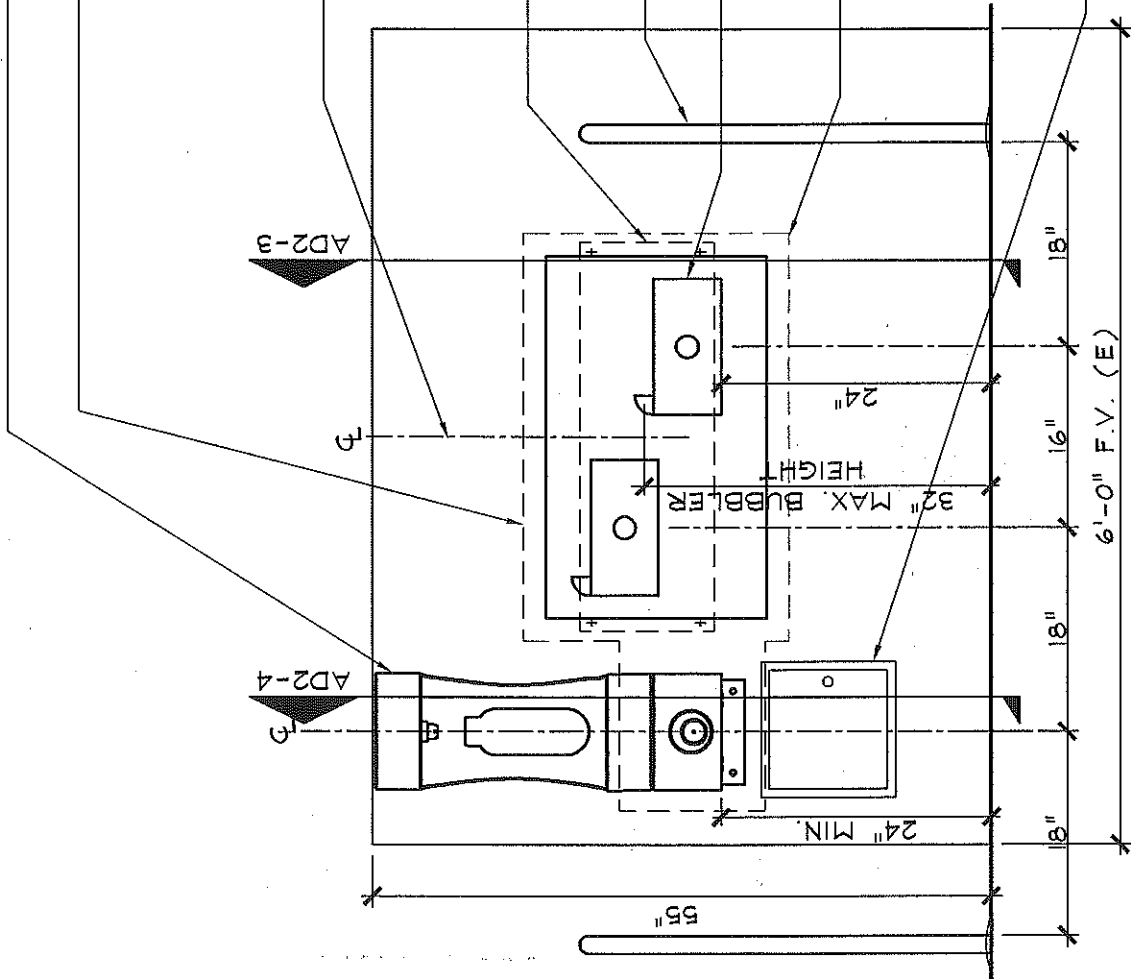
(N) GUARDRAIL, RE: 11/ADI-A6.60, TYP. OF 2

(N) ACCESSIBLE HI-LO DRINKING FOUNTAIN WITH BACK PANEL, RE: PLUMBING FIXTURE SCHEDULE, AD2-PI

(E) CERAMIC TILE TO REMAIN, PROTECT IN PLACE. REMOVE TILE FOR INSTALLATION OF FIXTURES. CAREFULLY REMOVE DECORATIVE TILE AND PROTECT FOR RE-INSTALLATION. REMOVE FIELD TILE AND INSTALL (N) CERAMIC TO MATCH (E)

(N) 12"x12" S.S. ACCESS PANEL. CAREFULLY CUT TILE TO RECEIVE PANEL

DRINKING FOUNTAIN MOUNTING HEIGHTS REFER TO AC.1 AND MFR. INSTALLATION INSTRUCTIONS



NOTE: CONTRACTOR ALSO TO PROVIDE ELECTRICAL, WATER AND SEWER

# HYDRATION STATION

SCALE: 3/4" = 1'-0"

Brookside Elementary School Building B (Bid and CA)

OAK PARK UNIFIED SCHOOL DISTRICT



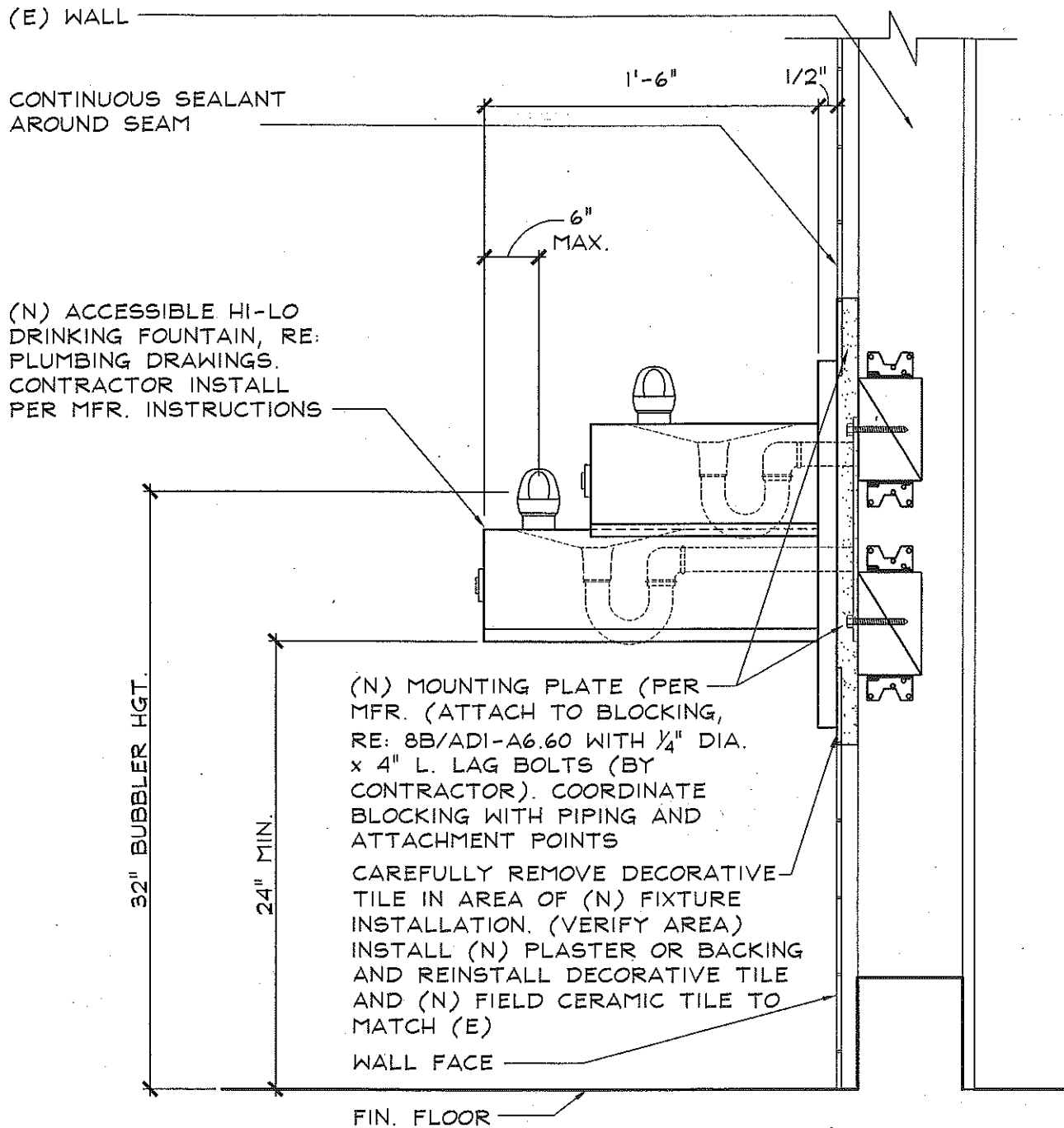
KPI ARCHITECTS INC. \*  
 ARCHITECTURE, PLANNING, INTERIOR DESIGN  
 650 EAST PARKRIDGE AVENUE, SUITE 105  
 CORONA, CALIFORNIA 92879-1092  
 PHONE: (800) 366-6381 FAX: (877) 493-2059

DRAWING NO.

AD2-2

DATE: February 15, 2013

PROJECT NO.: 234808



# SECTION AT DRINKING FOUNTAIN

SCALE: 1 1/2" = 1'-0"

Brookside Elementary School Building B (Bid and CA)



KPI ARCHITECTS INC.  
ARCHITECTURE, PLANNING, INTERIOR DESIGN  
650 EAST PARKRIDGE AVENUE, SUITE 105  
CORONA, CALIFORNIA 92879-1092  
PHONE: (800) 366-6381 FAX: (877) 493-2059

OAK PARK UNIFIED SCHOOL DISTRICT

DRAWING NO.

AD2-3

DATE: February 15, 2013

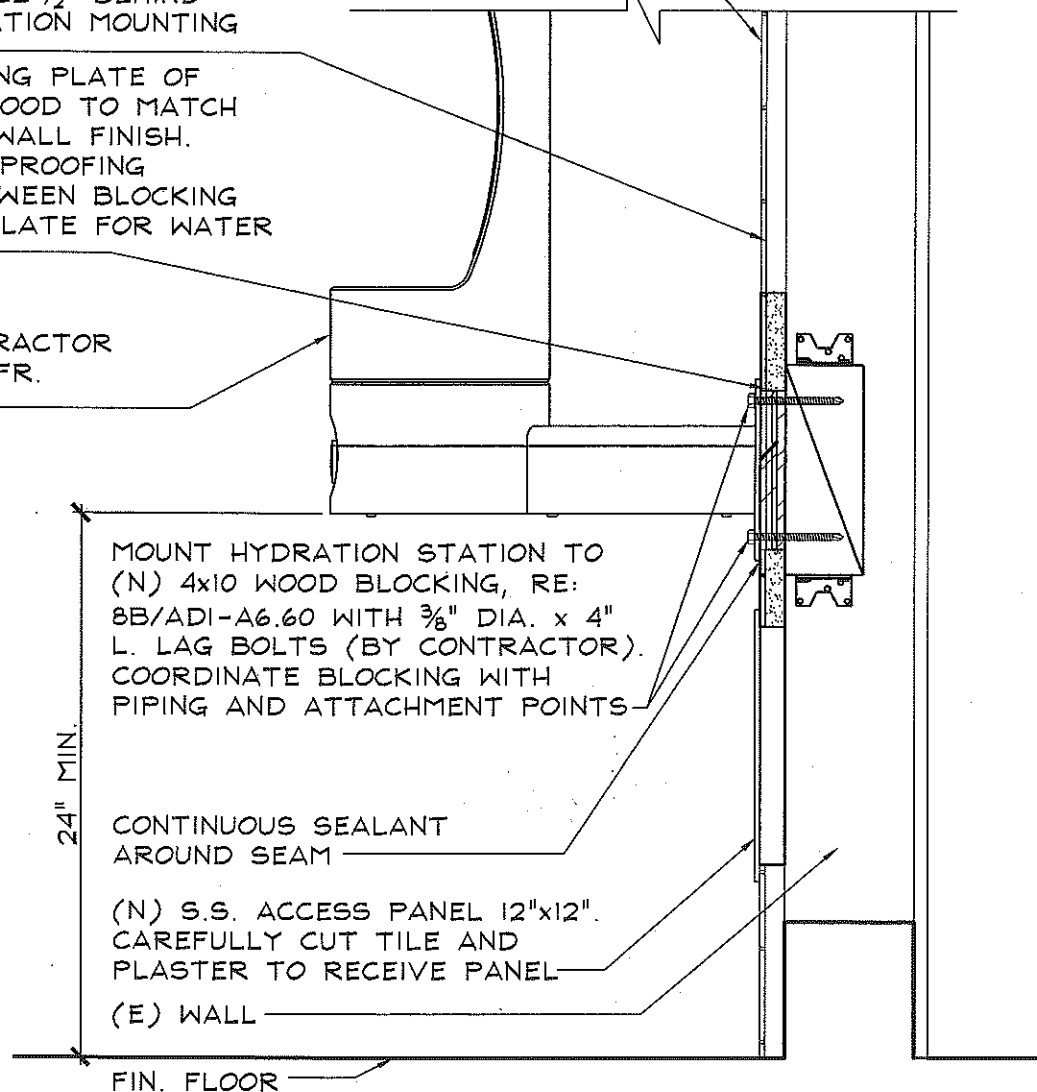
PROJECT NO.: 234808

(E) CERAMIC TILE  
PROTECT IN PLACE

INSTALL (N) BACKER BOARD AT  
REMOVED TILE. REINSTALL  
DECORATIVE CERAMIC TILE AND  
PROVIDE (N) FIELD TILE TO MATCH  
(E). EXTEND TILE  $\frac{1}{2}$ " BEHIND  
HYDRATION STATION MOUNTING  
PLATE

PROVIDE BACKING PLATE OF  
EXTERIOR PLYWOOD TO MATCH  
THICKNESS OF WALL FINISH.  
INSTALL WATERPROOFING  
MEMBRANE BETWEEN BLOCKING  
AND BACKING PLATE FOR WATER  
TIGHTNESS

(N) HYDRATION  
STATION. CONTRACTOR  
INSTALL PER MFR.  
INSTRUCTIONS



## SECTION AT HYDRATION STATION

SCALE: 1 1/2" = 1'-0"

Brookside Elementary School Building B (Bid and CA)



KPI ARCHITECTS INC.  
ARCHITECTURE, PLANNING, INTERIOR DESIGN  
650 EAST PARKRIDGE AVENUE, SUITE 105  
CORONA, CALIFORNIA 92879-1092  
PHONE: (800) 366-6381 FAX: (877) 493-2059

OAK PARK UNIFIED SCHOOL DISTRICT

DRAWING NO.

AD2-4

DATE: February 15, 2013

PROJECT NO.: 234808

PLUMBING FIXTURE SCHEDULE							
SYMBOL	DESCRIPTION	W	TRAP	V	CW	HW	REMARKS
DF 1	DRINKING FOUNTAIN HAWES # 1119.14 (ACCESSIBLE)	(2) 2"	(2) 1-1/4" x 1-1/2"	(2) 1-1/2"	1/2"	-	WALL MOUNTED. 14-GAUGE STAINLESS STEEL W/INTEGRAL 1/4" STAINLESS STEEL MOUNTING PLATE. ADA APPROVED. COMPLETE WITH VANDAL PROOF BOTTOM PLATES. NO. 6800 SUPPORT CARRIER, AND NO. 6700.4 MOUNTING PLATE. CHICAGO NO. 45LK STRAIGHT ANGLE STOP WITH 1/2" FEMALE INLET & OUTLET AND MOUNT AT ADA ACCESSIBLE HEIGHT.
BFS 1	BOTTLE FILLING STA. HALSEY TAYLOR #ENDURA II-4405BF	1 1/2"	1-1/4" x 1-1/2"	1-1/4"	1/2"	-	WALL MOUNT STEEL OUTDOOR BOTTLE FILLING STATION TEXTURED POWDER-COAT FINISH LEAD-FREE COMPLIANCE PER AB 1953 QUICK FILL RATE AT 1 GPM. SELF-CLOSING VANDAL RESISTANT PUSH BUTTON. INSTALL WITH ADA REQUIREMENTS.



2100 East Route 66, Suite 101  
Glendora, California 91740-4623  
Tel: (626) 650-0350  
Fax: (626) 650-0352  
WWW.PBSENGINEERS.COM  
Job No. 2010-012-01  
Mechanical and Electrical Consulting Engineers



Brookside Elementary School Building B (Bid and CA)

REFERENCE: AD1-P0.2



KPI ARCHITECTS INC.  
ARCHITECTURE, PLANNING, INTERIOR DESIGN  
650 EAST PARKRIDGE AVENUE, SUITE 105  
CORONA, CALIFORNIA 92879-1092  
PHONE: (800) 366-6381 FAX: (877) 493-2059

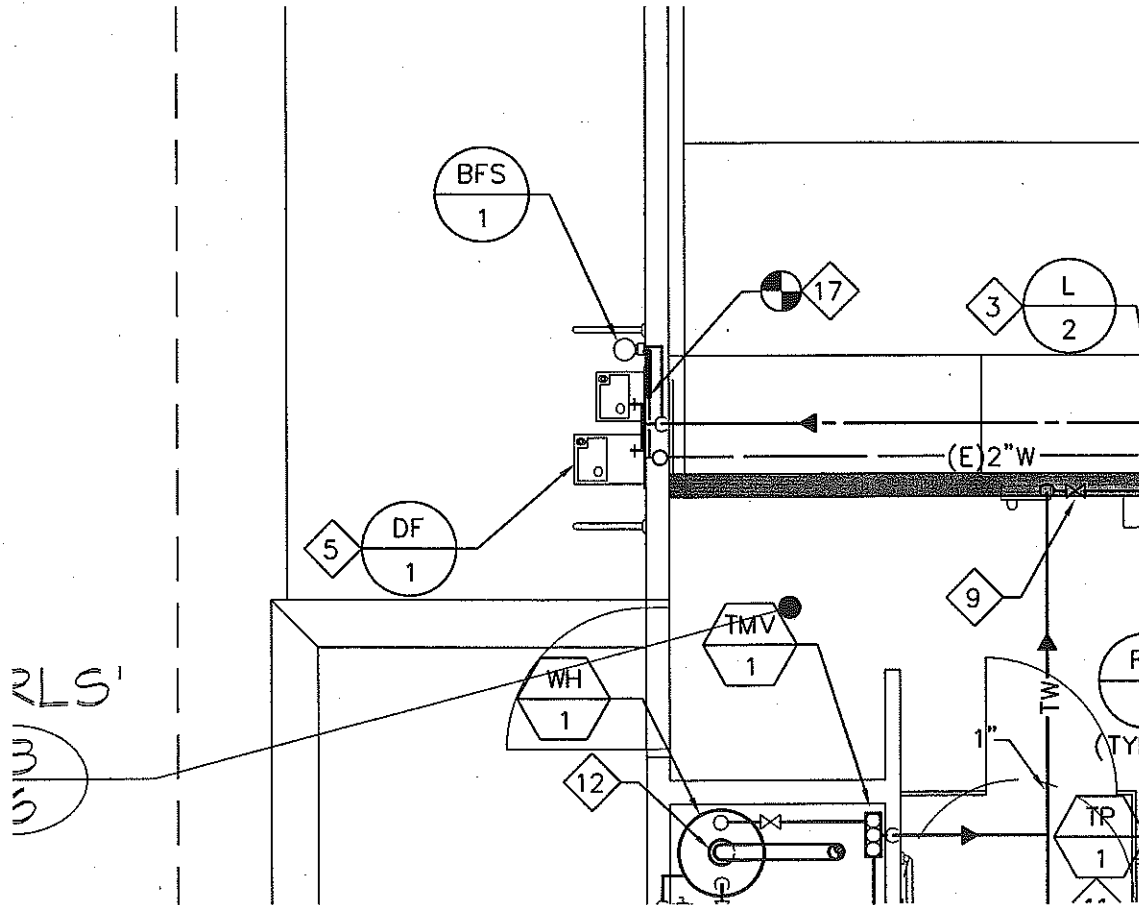
OAK PARK UNIFIED SCHOOL DISTRICT

DRAWING NO.

AD2-P1

DATE: FEBRUARY 15, 2013

PROJECT NO.: 234808

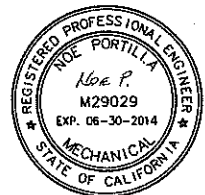


KEY NOTE:

◇ 17 POINT OF CONNECTION, 1 1/4" WASTE TO (E) 2" WASTE IN WALL.

**PBS**  
ENGINEERS  
Mechanical and Electrical Consulting Engineers

2100 East Route 66, Suite 101  
Glendora, California 91740-4623  
Tel: (626) 650-0350  
Fax: (626) 650-0352  
WWW.PBSENGINEERS.COM  
Job No. 2010-012-01



Brookside Elementary School Building B (Bid and CA)

REFERENCE: AD1-P2.2A



**KPI**  
ARCHITECTS INC.  
ARCHITECTURE, PLANNING, INTERIOR DESIGN  
650 EAST PARKRIDGE AVENUE, SUITE 105  
CORONA, CALIFORNIA 92879-1092  
PHONE: (800) 366-6381 FAX: (877) 493-2059

OAK PARK UNIFIED SCHOOL DISTRICT

DRAWING NO.

**AD2-P2**

DATE: FEBRUARY 15, 2013

PROJECT NO.: 234808